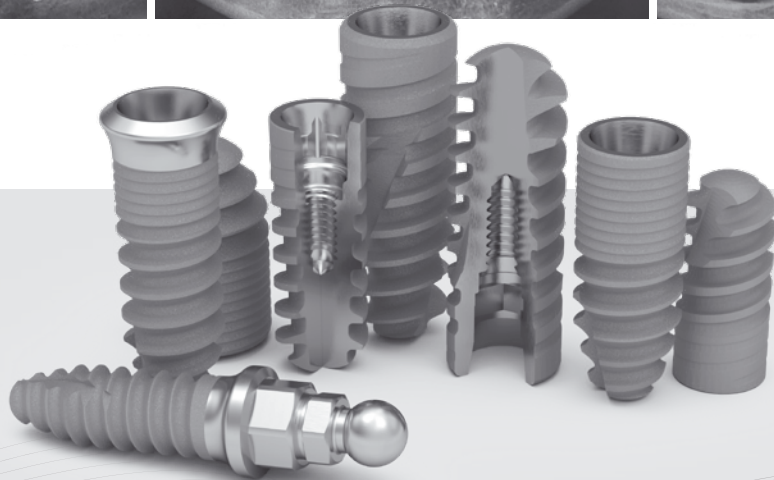
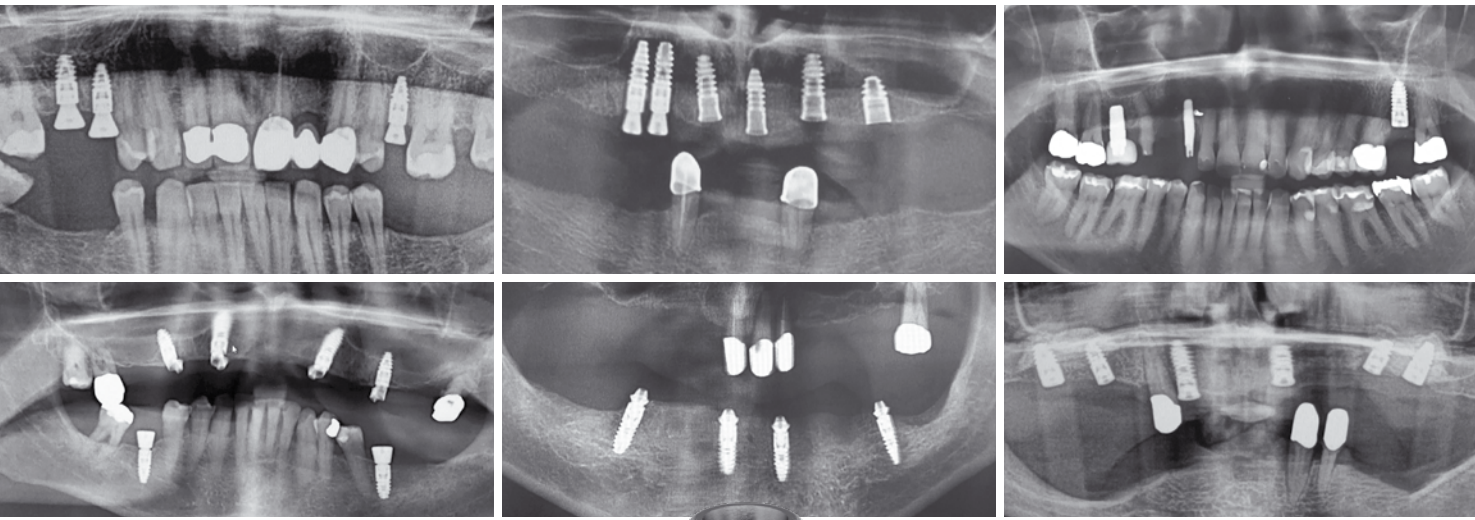


# ICX-IMPLANTS AND THEIR INDICATIONS.



# ICX

THE FAIR  
PREMIUM  
IMPLANT-  
SYSTEM.

SO THAT YOU KNOW FOR WHICH INDICATION  
YOU CAN USE WHICH ICX IMPLANT!

BE SMART. BE ICX.

**medentis**  
medical

# ICX-IMPLANTS ARE A MATTER OF TRUST.

The ICX implants (ICX-PREMIUM® – formerly ICX-templant®), ICX-TISSUE LEVEL and ICX-ACTIVE-MASTER® are inserted into the partially edentulous or edentulous upper and/or lower jaw and serve to fix dentures for the rehabilitation of chewing function and aesthetics in the upper and/or lower jaw.

In principle, treatment with implants is only recommended for patients with completed growth of the jawbone.

As a rule of thumb, the largest possible implant diameter should always be used and the implant should be surrounded by 1.25 mm of bone. Immediate, delayed immediate or late implantation is possible in combination with bridges, telescopic conical crowns, dentures and bar constructions.

Immediate, early or late loading of the implants is possible. For immediate loading, the implant should be inserted with a final torque of at least 35 Ncm and there should be 1.5 mm of bone around the implant.

The healing period can be covered or transgingival with gingiva-forming components. We generally recommend using ICX-PREMIUM® or ICX-ACTIVE-MASTER® for single-tooth restorations.

**The ICX-MINI® and ICX-MINI® machine polished implants** are designed to stabilise mucosa-supported prostheses in the dentures in the edentulous upper and/or lower jaw.

**ICX-MINI**  
Ø 2.9mm

in 8, 10 and  
12.5mm length

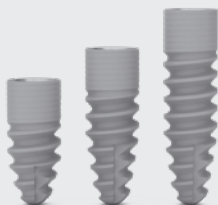


The ICX-MINI / ICX-MINI machine-polished implant should only be used in case of minor mechanical stress. Use in the molar region is generally not recommended.

The use of the ICX-MINI / ICX-MINI machine-polished 2.9mm as an additional bridge abutment cannot be recommended, in exceptional cases at most as an additional abutment to replace an pontic or pendant and then only if the number of standard implants (larger than 3.75mm diameter) is at least twice as high as the ICX-MINI implants.

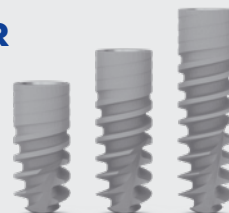
### ICX-PREMIUM Ø 3.3mm

in 8, 10 and  
12.5mm length



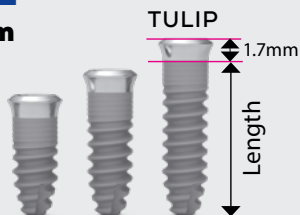
### ICX-ACTIVE-MASTER Ø 3.3mm

in 8, 10 and  
12.5mm length



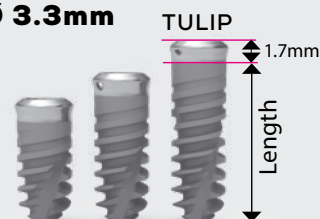
### ICX-PREMIUM TL Ø 3.3mm

in 8, 10 and  
12.5mm length



### ICX-ACTIVE-MASTER TL Ø 3.3mm

in 8, 10 and  
12.5mm length



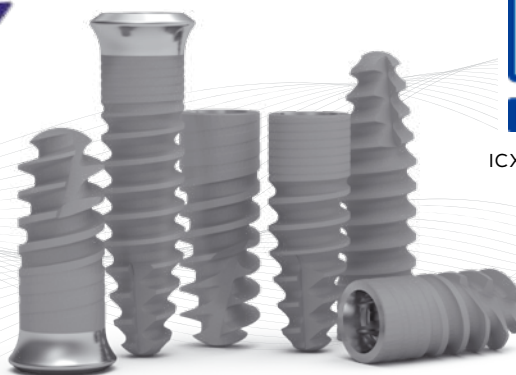
**ICX-PREMIUM® and ICX-ACTIVE-MASTER® BL and TL implants** have an independent inner geometry (prosthetic line). With a diameter of 3.3mm, they may only be used for the following indications:

- Single-tooth restoration: canines and incisors in the upper and lower jaw.
- Partially edentulous jaws: free-end and interdental gaps, for implant-supported fixed restorations, a splinted combination with larger diameter implants is recommended.
- Edentulous jaws: At least four implants must be connected.

# ICX



ICX-Shop online!



**IMPORTANT NOTE:** All indication possibilities given are to be understood exclusively as medentis medical's recommendations. They supplement the experience of the surgeons.

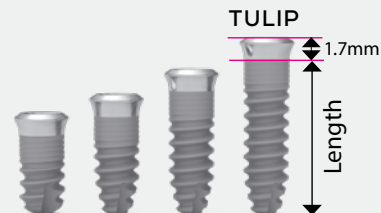
## ICX-PREMIUM BL DIAMETERS AND LENGTHS:

in 8, 10, 12.5 and 15mm length



## ICX-PREMIUM TL DIAMETERS AND LENGTHS:

Ø 3.45mm in 6.5, 8, 10 and 12.5mm length  
 Ø 3.75mm in 8, 10 and 12.5mm length  
 Ø 4.1mm in 8, 10 and 12.5mm length  
 Ø 4.8mm in 8, 10 and 12.5mm length



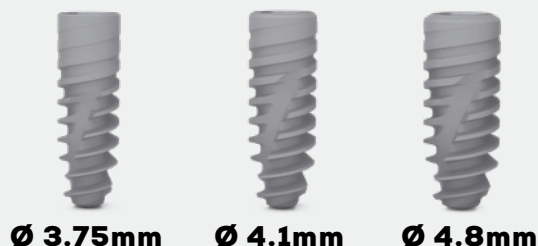
### additional

Ø 4.8mm in 4.9mm und 6.5mm length!



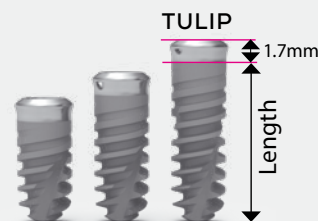
## ICX-ACTIVE-MASTER BL DIAMETERS AND LENGTHS:

in 8, 10, 12.5 and 15mm length



## ICX-ACTIVE-MASTER TL DIAMETERS AND LENGTHS:

Ø 3.75mm in 8, 10 and 12.5mm length  
 Ø 4.1mm in 8, 10 and 12.5mm length  
 Ø 4.8mm in 8, 10 and 12.5mm length



**In the following initial situations, ICX implants in diameters 3.45, 3.75, 4.1 and 4.8mm (ICX-PREMIUM® and ICX-ACTIVE-MASTER® as BL and TL) are indicated:**

- Single tooth restoration
- Partially toothed jaws
- Completely edentulous upper and/or lower jaws